



PanBlast™ Climate Controller

*"Surface Preparation
Is Our Business"*

The PanBlast™ Climate Controller is utilized to cool or heat the incoming compressed air supply from the respirator airline filter prior to entry into the respirator helmet, in order to provide a more comfortable environment for the blasting operator.

The use of the Climate Controller can reduce the incoming air temperature by up to 15°C (59°F) from ambient, or increase the air temperature by up to 30°C (86°F) from ambient.

The unit operates on the principle of using a static vortex to heat or cool the air, and it requires no batteries or power supply, and has no moving parts. Compressed air is simply fed to the inlet, and then exits the unit either cooled or heated, depending on the setting.

A simple sliding lever arrangement is provided to switch the unit between cooling and heating, and an adjustable belt for attaching the Climate Controller to the operators waist, as well as protective heat shield, are included with each unit.



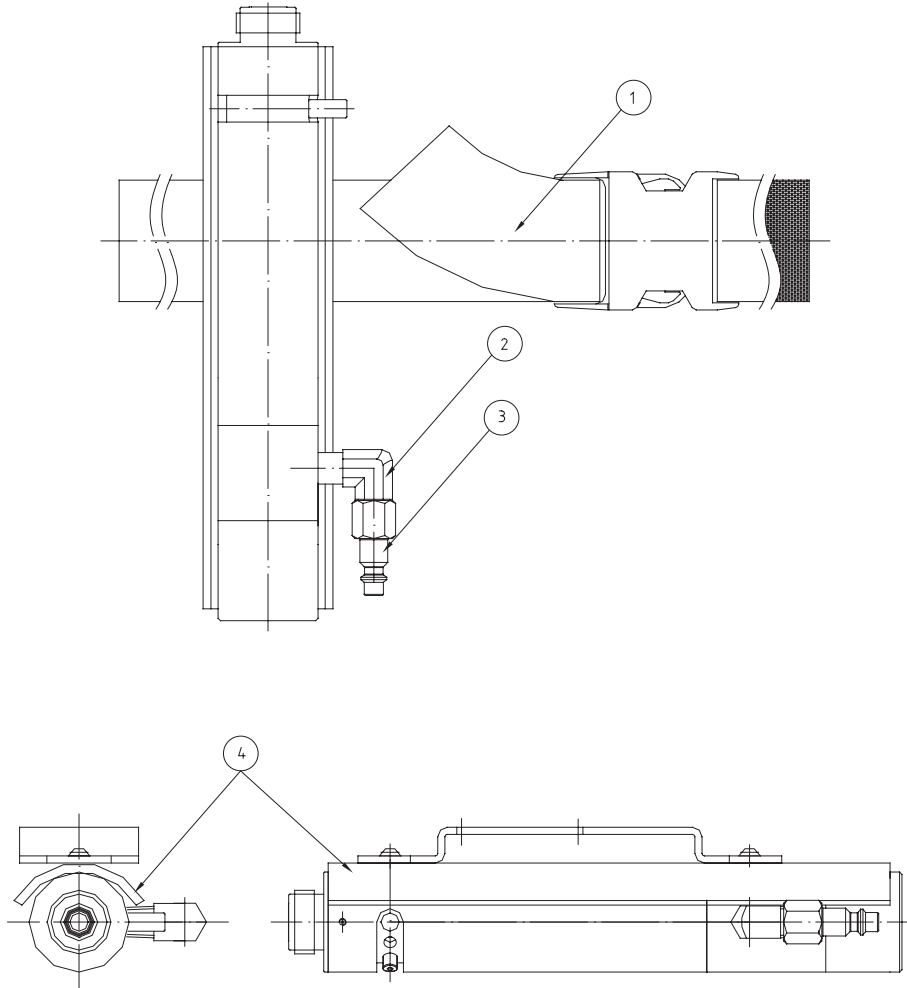
Note: Regulatory requirements for breathing air quality will vary depending on your region.

- For NIOSH requirements, breathing air must be of Grade D quality.
- For CE requirements, breathing air must be in accordance with EN12021.
- For AS/NZS requirements, breathing air must be in accordance with AS/NZS1715.

Blast Pots & Cabinets - Remote Control Valves - Abrasive Control Valves - Blast Nozzles - Nozzle Holders & Couplings - Helmets & Breathing Air Filters

PanBlast™ Climate Controller Assembly -

Stock Code	Description
BAC-AF-PB-0175	Climate Controller With Waist Belt



PanBlast™ Climate Controller Parts List -

Item	Stock Code	Description	Qty
1	BAC-AF-PB-0052	Waist Belt and Buckle	1
2	YAC-PF-PB-0232	Elbow M & M 1/4" NPT	1
3	YAC-PF-PB-0233	Nipple 1/4" Female NPT	1
4	YAC-AF-PB-0236	Heat Shield	1

Blast Pots & Cabinets - Remote Control Valves - Abrasive Control Valves - Blast Nozzles - Nozzle Holders & Couplings - Helmets & Breathing Air Filters - Blast Suits