



Safe-T-Pinch Valve



Product Features

The PanBlast™ Safe-T-Pinch Valve is a pneumatically operated normally closed horizontally configured pinch valve, combining dual pinch rams to pinch the blast hose via a piloted air signal to start and stop the abrasive blasting process.

- ▶ Fail safe normally closed system.
- ▶ Wear dispersion dual pinch rams.
- ▶ Accommodates all blast hose sizes.
- ▶ Encapsulated pinch ram chamber.

Common Applications

- ▶ General abrasive blasting operations.
- ▶ Multi-operator large site blasting projects.
- ▶ Shipyard manufacturing & repair yards.
- ▶ Oil & gas plant shut down maintenance.

Complementary Products



AirFlo Handle



Blast Hose



QuikStop II Handle



AirStop II Electric Handle



Fina II Valve



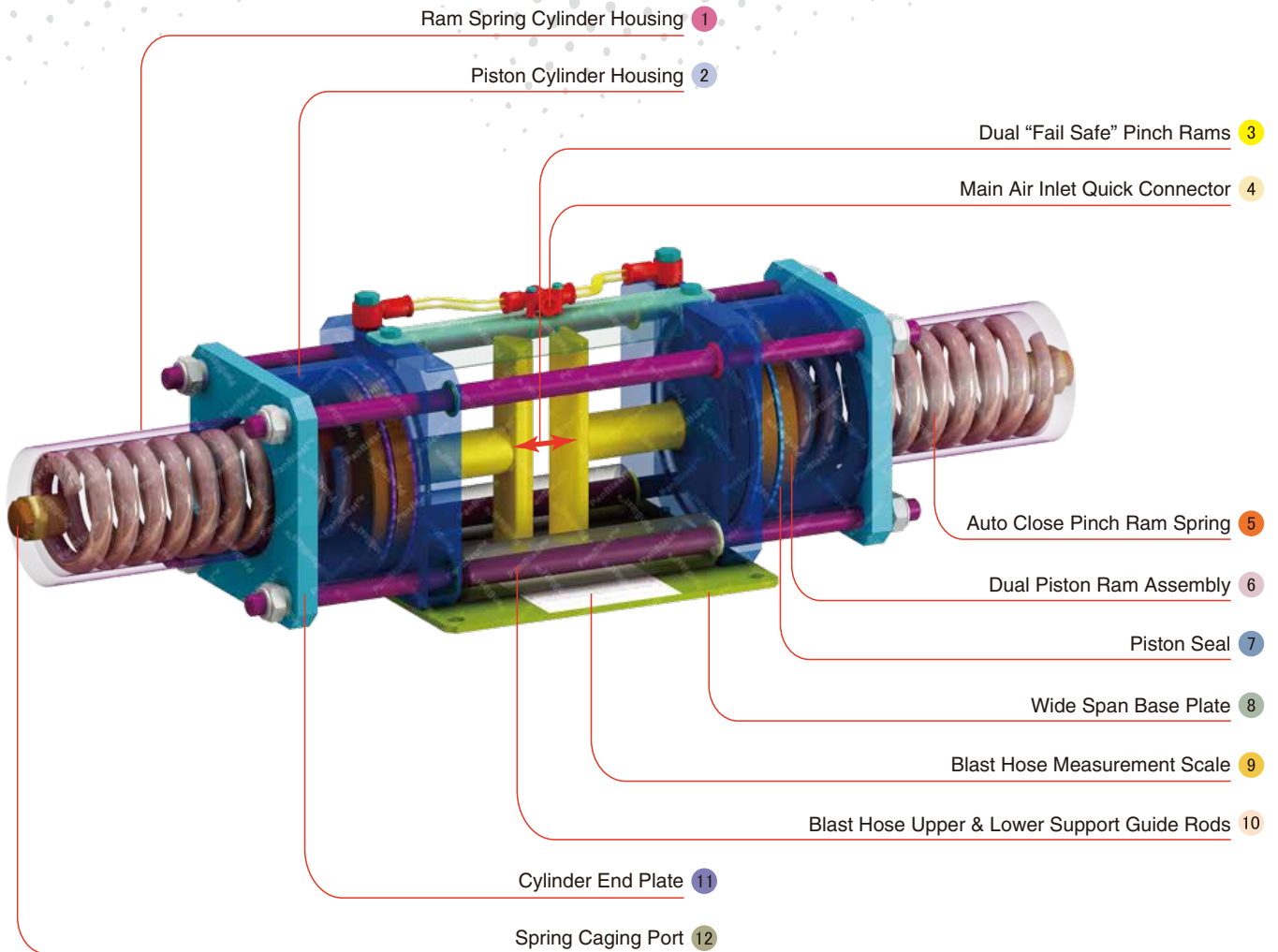
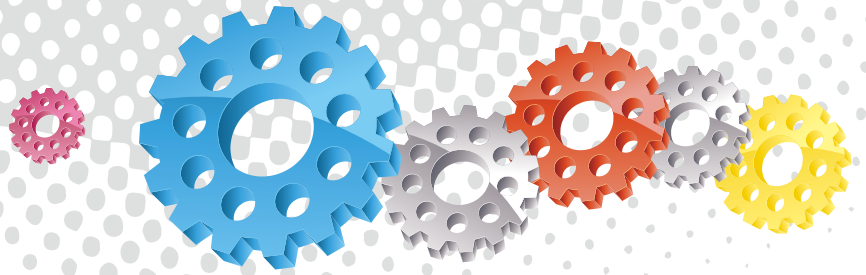
Tandem Valve



Electric Remote Control System(ERC)



Kombi II Valve



Component Highlights



1 Ram Spring Cylinder Housing

2 Piston Cylinder Housing

3 Dual "Fail Safe" Pinch Rams

4 Main Air Inlet Quick Connector

5 Auto Close Pinch Ram Spring

6 Dual Piston Ram Assembly

7 Piston Seal

8 Wide Span Base Plate

9 Blast Hose Measurement Scale

10 Blast Hose Upper & Lower Support Guide Rods

11 Cylinder End Plate

12 Spring Caging Port