



# QuikStop IIS Electric Control Handle



## Product Features

The PanBlast™ QuikStop IIS Electric Control Handle is an ultra compact ergonomic deadman device, allowing an operator to safely operate the blast nozzle without a conventional hold down handle, thus reducing operator fatigue. It can be used for control distances up to 100m (328ft).

- ▶ Simple ball and wrist strap device.
- ▶ Control distances up to 100m (328ft).
- ▶ Immediate pilot air shutoff if blast hose is dropped.
- ▶ Reduces operator fatigue.

## Common Applications

- ▶ General abrasive blasting operations.
- ▶ Operations requiring extended blasting uptime.

## Complementary Products



Kombi Valve



Kombi II Valve



Corsa II Valve



Tandem Valve



Aurora Hose LED



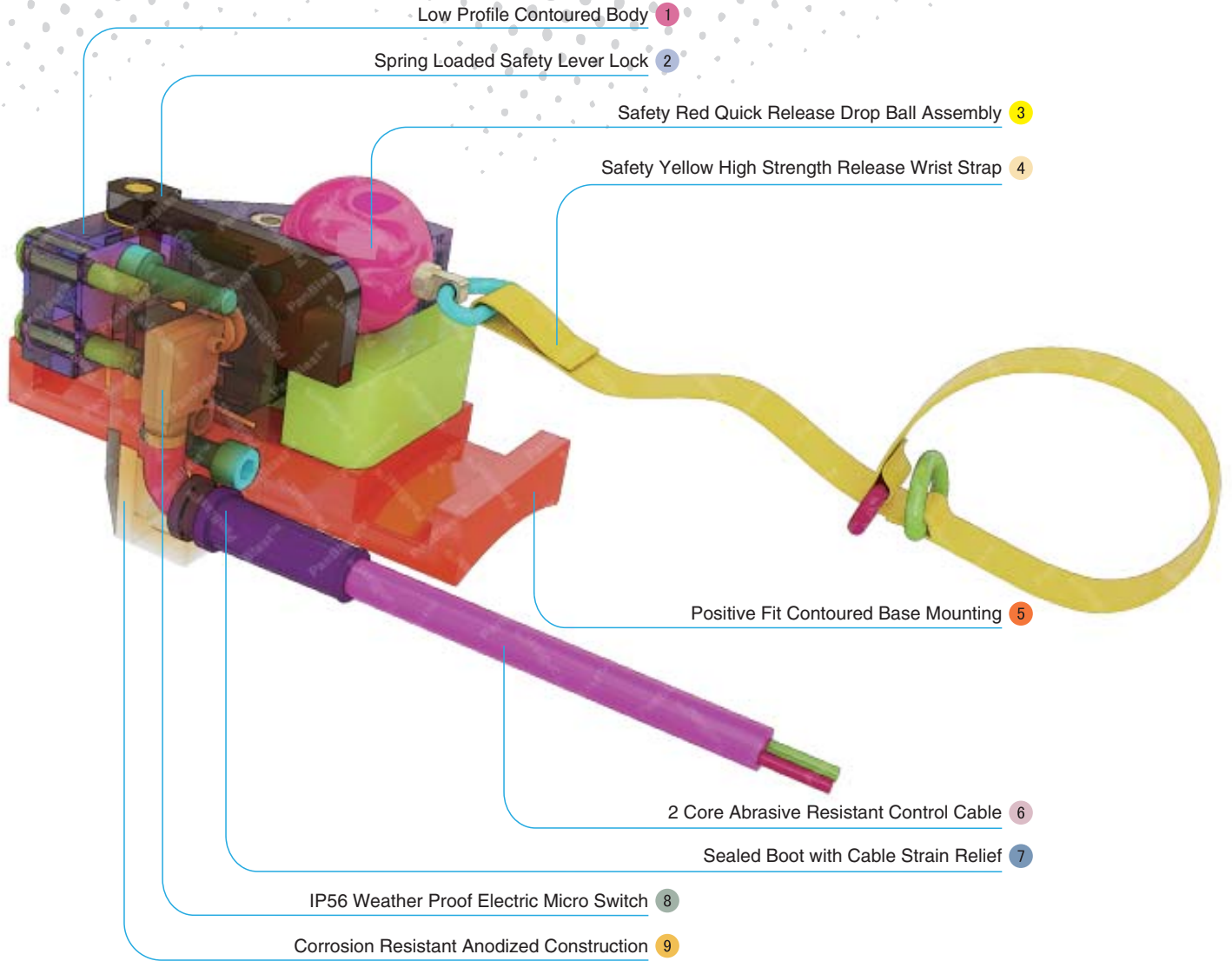
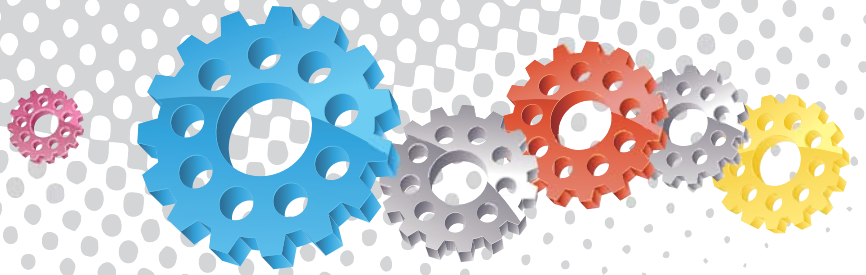
Corsa Valve



Blast Hoses



Electric Remote System



## Component Highlights



- |   |   |   |
|---|---|---|
| 1 Low Profile Contoured Body                  | 4 Safety Yellow High Strength Release Wrist Strap | 7 Sealed Boot with Cable Strain Relief      |
| 2 Spring Loaded Safety Lever Lock             | 5 Positive Fit Contoured Base Mounting            | 8 IP56 Weather Proof Electric Micro Switch  |
| 3 Safety Red Quick Release Drop Ball Assembly | 6 2 Core Abrasive Resistant Control Cable         | 9 Corrosion Resistant Anodized Construction |