

PanBlast™ Corsa II Abrasive Control Valve - Urethane Sleeve Type

*"Surface Preparation
Is Our Business"*

The PanBlast™ Corsa II Abrasive Control Valve has been developed from the Series I valve, to provide even greater reliability and efficiency.



PanBlast™ Corsa II Valve Design Features:

- Increased spring force for quicker valve actuation, which improves sleeve and seat service life.
- Improved plunger seal arrangement to ensure precise sealing and extended seal service life.
- Breather hole re-located and exhaust filter added to prevent dust from entering air chamber.
- Hexagon cast into valve top for easier assembly and disassembly.
- Connecting nipple carburise hardened to 55Rc, which greatly reduced wear.
- Piston travel stop nut added.
- Plunger seat design improved to provide better sealing and operating life.
- Improved piston design for smoother operation and better reliability.
- Available in both NPT & BSP threaded versions, with either 1¼" or 1½" threads.
- Plunger, seat holder, bush and plunger cap now feature stainless steel construction.
- Clean out/drain port for improved servicing and maintenance.
- Graduation markings on the valve top for more precise metering and abrasive control.

The PanBlast™ Series II Corsa Valve is a normally closed abrasive metering valve requiring a pilot compressed air signal to open it, which then permits abrasive flow. The Series II Corsa Valve may be used on both pressure hold and pressure release blast pots.

When used on pressure hold, multiple outlet pots, the Corsa II Valve permits each operator to blast totally independent of each other. When used with pressure release blast pots, the Corsa II Valve prevents the blast hose filling with abrasive each time the pot is depressurized.

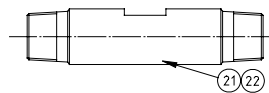


PanBlast™ Corsa II Valve Assemblies -

Stock Code	Description	Weight
BAC-VA-PB-0117	Corsa II Valve complete with 1 1/4" M x 1 1/4" M Pipe Nipple (Item 21)	5.90kg (12.98lbs)
BAC-VA-PB-0118	Corsa II Valve complete with 1 1/2" M x 1 1/2" M Pipe Nipple (Item 22)	6.10kg (13.42lbs)

PanBlast™ Corsa II Valve Parts List -

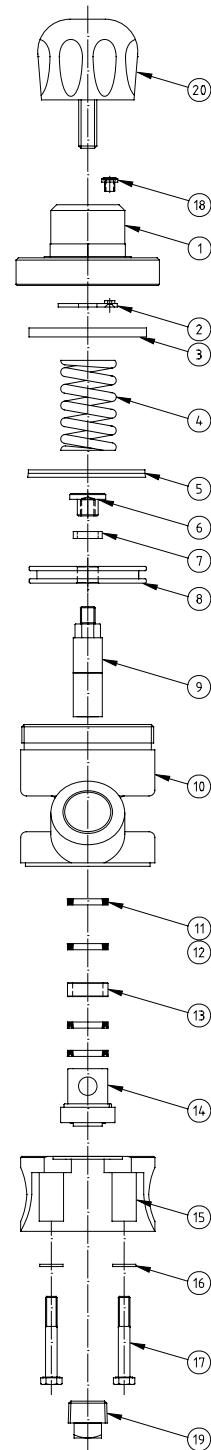
Item	Stock Code	Description	Qty
1	BAC-VA-PB-0093	Top	1
2	YAC-VA-PB-0095	Anti-Vibration Washer	1
3	YAC-VA-PB-0094	Stop Ring	1
4	YAC-VA-PB-0096	Spring	1
5	YAC-VA-PB-0097	Piston Seal	1
6	YAC-VA-PB-0124	Plunger Cover	1
7	YAC-VA-PB-0137	Nylon Washer	1
8	YAC-VA-PB-0098	Piston	1
9	BAC-VA-PB-0099	Tungsten Plunger	1
10	BAC-VA-PB-0100	Cylinder	1
11	YAC-VA-PB-0052	Plunger Seal	4
12	YAC-BS-PB-0032	O-Ring	2
13	YAC-VA-PB-0125	Bush	1
14	YAC-VA-PB-0120	Urethane Sleeve	1
15	YAC-VA-PB-0194	Base	1
16	YAC-FN-PB-0258	Flat Washer	4
17	YAC-FN-PB-0104	Hex Head Bolt	4
18	BAC-AF-PB-0163	Exhaust Filter	1
19	YAC-PF-PB-0231	Square Head Plug	1
20	BAC-VA-PB-0092	Control Knob	1
21	BAC-VA-PB-0090	1 1/4" x 1 1/4" Pipe Nipple (Use with BAC-VA-PB-0117)	1
22	BAC-VA-PB-0091	1 1/2" x 1 1/2" Pipe Nipple (Use with BAC-VA-PB-0118)	1



PanBlast™ Corsa II Valve Service Kits -

Stock Code	Description
BAC-VA-PB-0119	Corsa II Valve Urethane Seal Kit - Includes items 5, 11, 12, 13 & 14
BAC-VA-PB-0139	Corsa II Valve Piston Kit - Includes items 2, 3, 4, 5, 6, 7 & 8
BAC-VA-PB-0140	Corsa II Valve BSP Base Kit - Includes items 15, 16 & 17

The Corsa II Valve may also be fitted with an abrasive cut off switch to stop abrasive flow, but still permit air flow to the blast nozzle, to create a blow down function. A plunger and orifice sleeve assembly meters the abrasive flow to the blast nozzle. Abrasive flow adjustment is via a metering knob that adjusts the depth of the plunger travel within the orifice sleeve. The standard sleeve is manufactured from wear resistant urethane, and an optional tungsten carbide sleeve and seat arrangement is also available for applications involving high wear rates.



Blast Pots & Cabinets - Remote Control Valves - Abrasive Control Valves - Blast Nozzles - Nozzle Holders & Couplings - Helmets & Breathing Air Filters - Blast Suits