

PanBlast™ Cosmo Supplied Air Respirator Helmet

*"Surface Preparation
Is Our Business"*



The PanBlast™ Cosmo Supplied Air Respirator Helmet is designed to protect the blasting operator from rebounding abrasive, dust, debris and excessive noise levels generated from the abrasive blasting process.

The PanBlast™ Cosmo Supplied Air Respirator Series is approved to the stringent CEN European PPE (Personal Protective Equipment) Directive 89/686/EEC EN14594:2005 Class 4B respiratory protective devices, whilst pending approval for Australian & New Zealand Standards AS/NZS1716:2003.

PanBlast™ Cosmo Supplied Air Respirator Helmet weighing only at 3.2kg (7lbs) is supplied standard with AcousticFlex noise suppression Breathing Tube, Air Flow Indicator providing assurance for the operator on air flow to the Supplied Air Respirator is within regulatory Specification.

PanBlast™ Cosmo Supplied Air Respirator Design Features:

- * Rigid bright Safety Red polyethylene molded outer shell and washable/removable Nylon Inner Collar and Outer Cape providing visibility and protection.
- * Front flow air dispersion system with Air Flow indicator maximizing operator comfort and lens visibility.
- * Protective rim on outer shell, accompanied by sealing band and O-ring, eliminating abrasives and dust ingress.
- * Quick release Window frame with 3 layers of protection; Outer Tear Off Lenses, Intermediate Lens and Inner Lens.
- * Supplied Inner lens, complies to EN166:2001 Table 7; Class B and conforming to AS1337 - V Grade Impact Resistance.
- * Adjustable head harness ensuring proper fitment.
- * Helmet Strap Handle for easy handling and storage.
- * Noise suppression AcousticFlex Breathing Tube supplied as standard.
- * Suitable for all abrasives blasting operations.
- * Optional integration with PanBlast™ Air Flow/Air Cooling or Climate Controllers.
- * Replaceable lenses are available in the forms of 100 pieces/packet (Outer Tear Off Lenses), 50 pieces/packet (intermediate Lens) and 20 pieces/packet (Inner Lens).



Note: Regulatory requirements for breathing air quality will vary depending on your region.

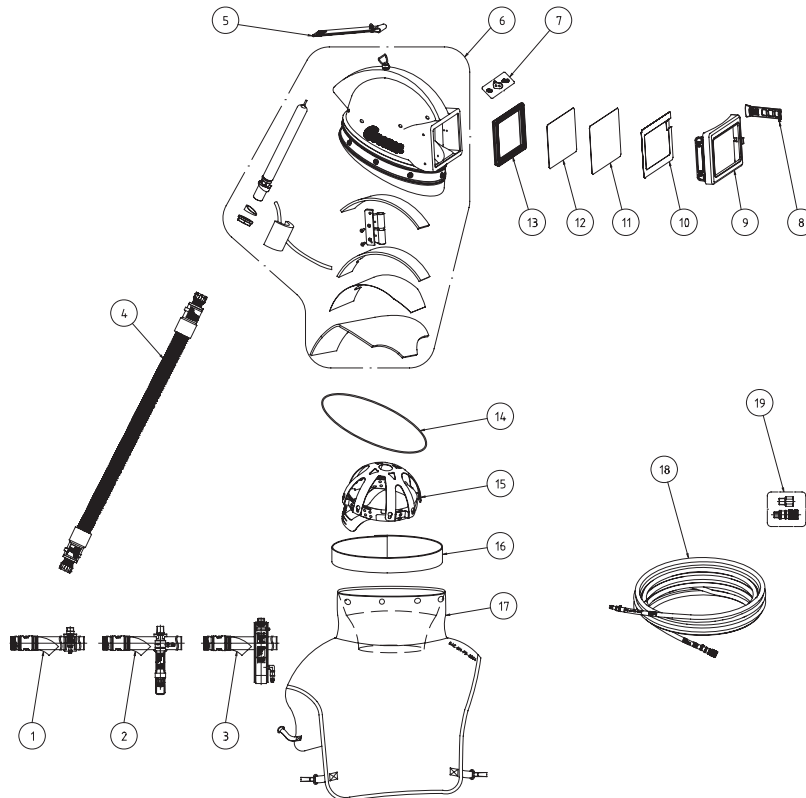
- For NIOSH requirements, breathing air must be of Grade D quality.
- For CE requirements, breathing air must be in accordance with EN12021.
- For AS/NZS requirements, breathing air must be in accordance with AS/NZS1715.

PanBlast™ Cosmo Supplied Air Respirator Helmet Assemblies -

Stock Code	Description	Weight
BAC-BH-0178-00	Cosmo Supplied Air Respirator With Standard Cape	3.2Kg (7.00lbs)
BAC-BH-0175-00	Cosmo Supplied Air Respirator With Standard Cape & Air Flow Controller	3.5Kg (7.71lbs)
BAC-BH-0176-00	Cosmo Supplied Air Respirator With Standard Cape & Air Cooling Controller	3.7Kg (8.15lbs)
BAC-BH-0177-00	Cosmo Supplied Air Respirator With Standard Cape & Climate Controller	4.1Kg (9.03lbs)

PanBlast™ Cosmo Supplied Air Respirator Helmet Parts List-

Item	Stock Code	Description	Qty
1	BAC-AF-PB-0036	Air Flow Controller	1
2	BAC-AF-PB-0032	Air Cooling Controller	1
3	BAC-AF-PB-0175	Climate Controller	1
4	BAC-BH-0161-03	AcoustiFlex Breathing Tube	1
5	BAC-BH-PB-0009	Respirator Strap Handle Kit	1
6	YAC-BH-0228-00	Respirator Helmet Shell Assembly	1
7	YAC-BH-0230-00	Frame Strap Clasp	1
8	YAC-BH-0189-00	Frame Strap	1
9	YAC-BH-0232-00	Window Frame Assembly	1
10	BAC-BH-0191-00	Tear Off Outer Lens - Pack of 100	0.03
11	BAC-BH-0192-00	Intermediate Lens - Pack of 50	0.02
12	BAC-BH-0193-00	Inner Lens Premium - Pack of 20	0.05
13	BAC-BH-0194-00	Inner Lens Gasket	1
14	YAC-BH-0195-00	Helmet Shell O-Ring	1
15	YAC-BH-0231-00	Suspension Harness Kit	1
16	YAC-BH-PB-0012	Sealing Band	1
17	BAC-BH-PB-0004	Inner Collar & Outer Cape - Standard	1
18	BAC-AF-PB-0071	20m Airline Hose W/ Quick Disconnects	1
19	BAC-BH-0137-00	Quick Disconnect BSP/NPT Fittings Kit	1



Blast Pots & Cabinets - Remote Control Valves - Abrasive Control Valves - Blast Nozzles - Nozzle Holders & Couplings - Helmets & Breathing Air Filters - Blast Suits