

## *PanBlast™ Kombi II NPT Remote Control Valve*

The PanBlast™ Kombi II NPT Remote Control Valve is a combination inlet and outlet valve controlling both the compressed air supply and the exhaust air to and from the blast pot.

The PanBlast™ Kombi II NPT Remote Control Valve is the latest development of the Kombi Valve featuring a simplified design and utilizing modern materials and processes.

### *Features:*

- \* Updated simplified design with the exhaust hose compression body now integrated with the main cylinder body.
- \* A redesigned upper rod guide, now moulded in Delrin®.
- \* A new clear acrylic top cover allows inspection of the exhaust hose closing action and condition of the exhaust hose.
- \* Powder coat finish on all external surfaces.
- \* Anodized internal main cylinder.
- \* Complete interchangeability with the Kombi I Valve and other generic type valves, providing a simple 'plug out, plug in' retrofit solution.

Operation of the PanBlast™ Kombi II NPT Remote Control Valve is via a pneumatic signal received from the PanBlast™ AirStop Remote Control Handle when the lever is depressed by the operator. The pneumatic signal drives a single piston assembly that simultaneously opens the supply air inlet port and clamps the exhaust hose closed which in turn pressurizes the blast pot.

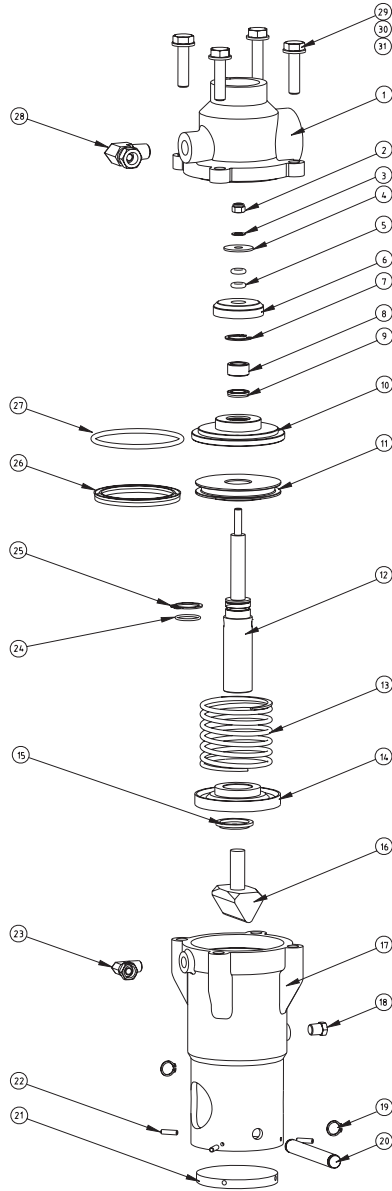
When the operator releases the AirStop Remote Control Handle the piston assembly is retraced by a return spring, simultaneously closing the supply air inlet port and releases the exhaust hose clamp and thus depressurizes the blast pot.



## PanBlast™ Kombi II NPT Valve Assembly -

Stock Code	Description	Weight
BAC-RC-0509-00	Kombi II NPT Control Valve C/W Fittings	3.9kg (8.6lbs)

## PanBlast™ Kombi II NPT Valve Parts List -



Item	Stock Code	Description	Qty
1	YAC-RC-0511-00	Base	1
2	YAC-FN-PB-0256	Lock Nut 1/4"	1
3	YAC-FN-PB-0233	Curved Spring Washer ID 6.4mm	1
4	YAC-FN-PB-0217	Flat Washer ID 8mm x OD 26mm x 1.6mm Thk	1
5	YAC-BS-PB-0017	O-Ring ID 6.3mm x Dia 3.53mm	2
6	YAC-RC-PB-0158	Valve Plug	1
7	YAC-FN-0300-00	Internal Circlip to suit Dia 22mm Bore	1
8	YAC-RC-0156-01	Lower Rod Guide Bush	1
9	YAC-RC-PB-0155	Lower Seal	1
10	YAC-RC-0154-04	Lower Rod Guide	1
11	YAC-RC-PB-0153	Piston	1
12	YAC-RC-PB-0152	Shaft	1
13	YAC-RC-PB-0151	Spring	1
14	YAC-RC-0515-00	Upper Rod Guide	1
15	YAC-RC-PB-0147	Upper Seal	1
16	YAC-RC-0146-02	Pinch Ram	1
17	YAC-RC-0512-00	Cylinder	1
18	BAC-AF-PB-0168	Exhaust Filter 1/8" NPT	1
19	YAC-FN-0349-00	External Circlip Dia 12mm	2
20	YAC-RC-0514-00	Pin	1
21	YAC-RC-0513-00	Cover	1
22	YAC-FN-0347-00	Plain Cup/P Screw Socket Set M4 x 15mm	4
23	YAC-PF-PB-0234	Elbow c/w Nut F & M 1/8" NPT	1
24	YAC-BS-PB-0018	O-Ring ID 19mm x Dia 1.78mm	1
25	YAC-FN-PB-0216	External Circlip Dia 20.5mm	1
26	YAC-RC-PB-0162	Piston Seal	1
27	YAC-BS-PB-0016	O-Ring ID 73mm x Dia 5.33mm	1
28	YAC-PF-PB-0235	Elbow c/w Nut F & M 1/4" NPT	1
29	YAC-FN-0358-00	Screw Machine Socket C/Head M10 x 40mm	4
30	YAC-FN-PB-0017	Flat Washer 10mm	4
31	YAC-FN-PB-0016	Spring Washer 10mm	4

## PanBlast™ Kombi II NPT Valve Service Kits -

Stock Code	Description
BAC-RC-0365-00	Plug Kit - Includes items 2, 3, 4, 5 & 6
BAC-RC-PB-0265	Seal Kit - Includes items 2, 3, 4, 5, 6, 9, 15, 24, 25, 26 & 27

Blast Pots & Cabinets - Remote Control Valves - Abrasive Control Valves - Blast Nozzles - Nozzle Holders & Couplings - Helmets & Breathing Air Filters - Blast Suits