



# PanBlast™ Nylon Hose & Pot Couplings

*"Surface Preparation  
Is Our Business"*

PanBlast™ Nylon Hose Couplings (NHC) are designed for coupling blast hoses together or attaching the hose to the blast pot. Both lightweight and durable, the NHC fittings are ideal for most compressed air blasting applications.

Manufactured from injection moulded nylon, all couplings are identical, ensuring they accurately couple together every time. An internal raised thread allows ease of fitting to the blast hose and prevents the couplings from inadvertently slipping off the blast hose.

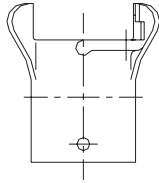
Pre-installed, spring loaded safety lock pins automatically interlock with the mated couplings.

Threaded pot couplings (NTC) are also available for use of the abrasive feed valve attached to the blast pot.

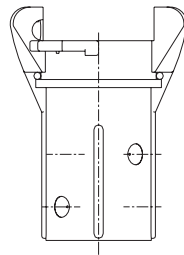


*Blast Pots & Cabinets - Remote Control Valves - Abrasive Control Valves - Blast Nozzles - Nozzle Holders & Couplings - Helmets & Breathing Air Filters*

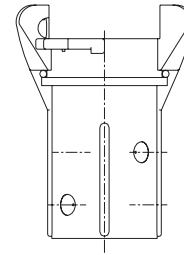
## PanBlast™ NHC Nylon Hose Couplings -



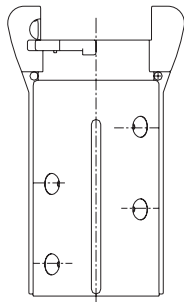
NHC - 1/2



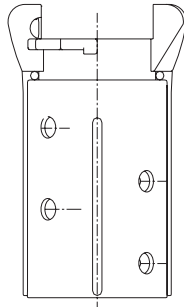
NHC - 3/4



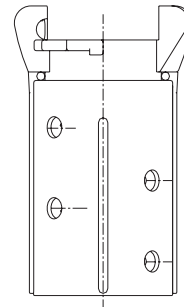
NHC - 1 & NHC-1-25



NHC - 2



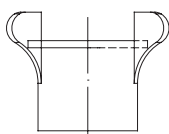
NHC - 3



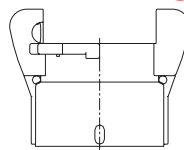
NHC - 4

Stock Code	Description	To Fit Hose O.D.	Weight	Gasket To Suit
BAC-HC-PB-0054	NHC-1/2 Nylon Hose Coupling	Φ34mm (1 5/16")	0.07kg (0.15lbs)	BCG-1/2 (BAC-HC-PB-0016)
BAC-HC-PB-0051	NHC-3/4 Nylon Hose Coupling	Φ34mm (1 5/16") ID - 19mm (3/4")	0.19kg (0.42lbs)	NCG-1 (BAC-HC-PB-0018)
BAC-HC-PB-0001	NHC-1 Nylon Hose Coupling	Φ38mm (1 1/2")	0.17kg (0.37lbs)	NCG-1-25 (BAC-HC-PB-0059)
BAC-HC-PB-0060	NHC-1-25 Nylon Hose Coupling	Φ38mm (1 1/2") ID - 25mm (1")	0.17kg (0.37lbs)	NCG-2 (BAC-HC-PB-0019)
BAC-HC-PB-0002	NHC-2 Nylon Hose Coupling	Φ48mm (1 7/8")	0.22kg (0.49lbs)	
BAC-HC-PB-0003	NHC-3 Nylon Hose Coupling	Φ55mm (2 3/16")	0.23kg (0.51lbs)	
BAC-HC-PB-0039	NHC-4 Nylon Hose Coupling	Φ60mm (2 3/8")	0.24kg (0.53lbs)	

## PanBlast™ NTC Nylon Pot Couplings -



NTC-1/2



NTC - 1

Stock Code	Description	Thread Size	Weight	Gasket To Suit
BAC-HC-PB-0057	NTC-1/2 Nylon Threaded Coupling	13mm (1/2")	0.06kg (0.13lbs)	BCG-1/2 (BAC-HC-PB-0016)
BAC-HC-PB-0009	NTC-1 Nylon Threaded Coupling	32mm (1 1/4")	0.14kg (0.31 lbs)	NCG-2 (BAC-HC-PB-0019)

- All couplings are supplied complete with 1 gasket. All hose couplings also come complete with a set of screws for attachment to the blast hose.
- All gaskets are also sold separately in packs of ten (10).

Note: Correct fitting is vital for proper sealing and wear life of all blast hose couplings. Ensure that the blast hose ends are cut square, and that the coupling is fully pushed onto the hose, and butts firmly up against the end of the blast hose. Also ensure that all fixing screws are correctly screwed into the holes provided. Pan Abrasives also recommends the use of a polyurethane based bonding sealant be used around the end of the blast hose, prior to fitting of the hose couplings.