



PanBlast™ Nylon Blast Nozzle Holders

*"Surface Preparation
Is Our Business"*

PanBlast™ Nylon Nozzle Holders (NNH) are designed for attaching blast nozzles to the blast hose.

Lightweight, tough and durable, the NNH nozzle holders are ideal for all compressed air blasting applications.

Manufactured from tough injection moulded nylon, the NNH nozzle holders will not cause the galling sometimes associated with aluminium nozzle holders.

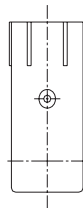
An internal raised thread allows for ease of fitting to the blast hose and also assists in preventing the nozzle holder from slipping off the blast hose.

All PanBlast™ nozzle holders are supplied with a nozzle washer and all screws required to attach the holder to the blast hose.



Blast Pots & Cabinets - Remote Control Valves - Abrasive Control Valves - Blast Nozzles - Nozzle Holders & Couplings - Helmets & Breathing Air Filters

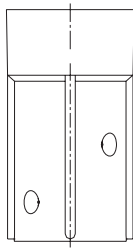
PanBlast™ Nylon Nozzle Holders - 19mm (3/4") Fine Thread -



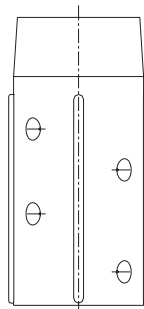
NNH - 0

Stock Code	Description	To Suit Hose O.D.	Weight	Washer To Suit
BAC-NZ-PB-0021	NNH-0 Nozzle Holder - 19mm (3/4") Fine Thread	Φ28mm (1 1/8")	0.06kg (0.13lbs)	RNW-1 (BAC-NZ-PB-0029)

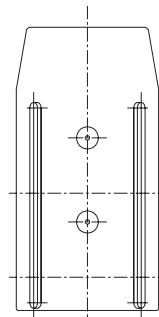
PanBlast™ Nylon Nozzle Holders - 50mm (2") Coarse Thread -



NNH - 1/2 & NNH - 1



NNH - 2



NNH - 3

Stock Code	Description	To Suit Hose O.D.	Weight	Washer To Suit
BAC-NZ-PB-0173	NNH-1/2 Nozzle Holder - 50mm (2") Coarse Thread	Φ34mm (1 5/16")	0.19kg (0.42lbs)	RNW-25 (BAC-NZ-PB-0030) For 25mm (1") Nozzle Entry
BAC-NZ-PB-0022	NNH-1 Nozzle Holder - 50mm (2") Coarse Thread	Φ38mm (1 1/2")	0.19kg (0.42lbs)	
BAC-NZ-PB-0023	NNH-2 Nozzle Holder - 50mm (2") Coarse Thread	Φ48mm (1 7/8")	0.16kg (0.35lbs)	RNW-32 (BAC-NZ-PB-0031) For 32mm (1 1/4") Nozzle Entry
BAC-NZ-PB-0024	NNH-3 Nozzle Holder - 50mm (2") Coarse Thread	Φ55mm (2 3/16")	0.19kg (0.42lbs)	

- All holders are supplied complete with 1 washer. All nozzle holders also come complete with a set of screws for attachment to the blast hose.
- All washers are also sold separately in packs of ten (10).

Note: Correct fitting is vital for proper sealing and wear life of all blast hose couplings. Ensure that the blast hose ends are cut square, and that the coupling is fully pushed onto the hose, and butts firmly up against the end of the blast hose. Also ensure that all fixing screws are correctly screwed into the holes provided. Pan Abrasives also recommends the use of a polyurethane based bonding sealant be used around the end of the blast hose, prior to fitting of the hose couplings.