



## PanBlast™ Helix 150 NPT Remote Control Valve

*"Surface Preparation  
Is Our Business"*

### *PanBlast™ Helix 150 NPT Remote Control Valve*

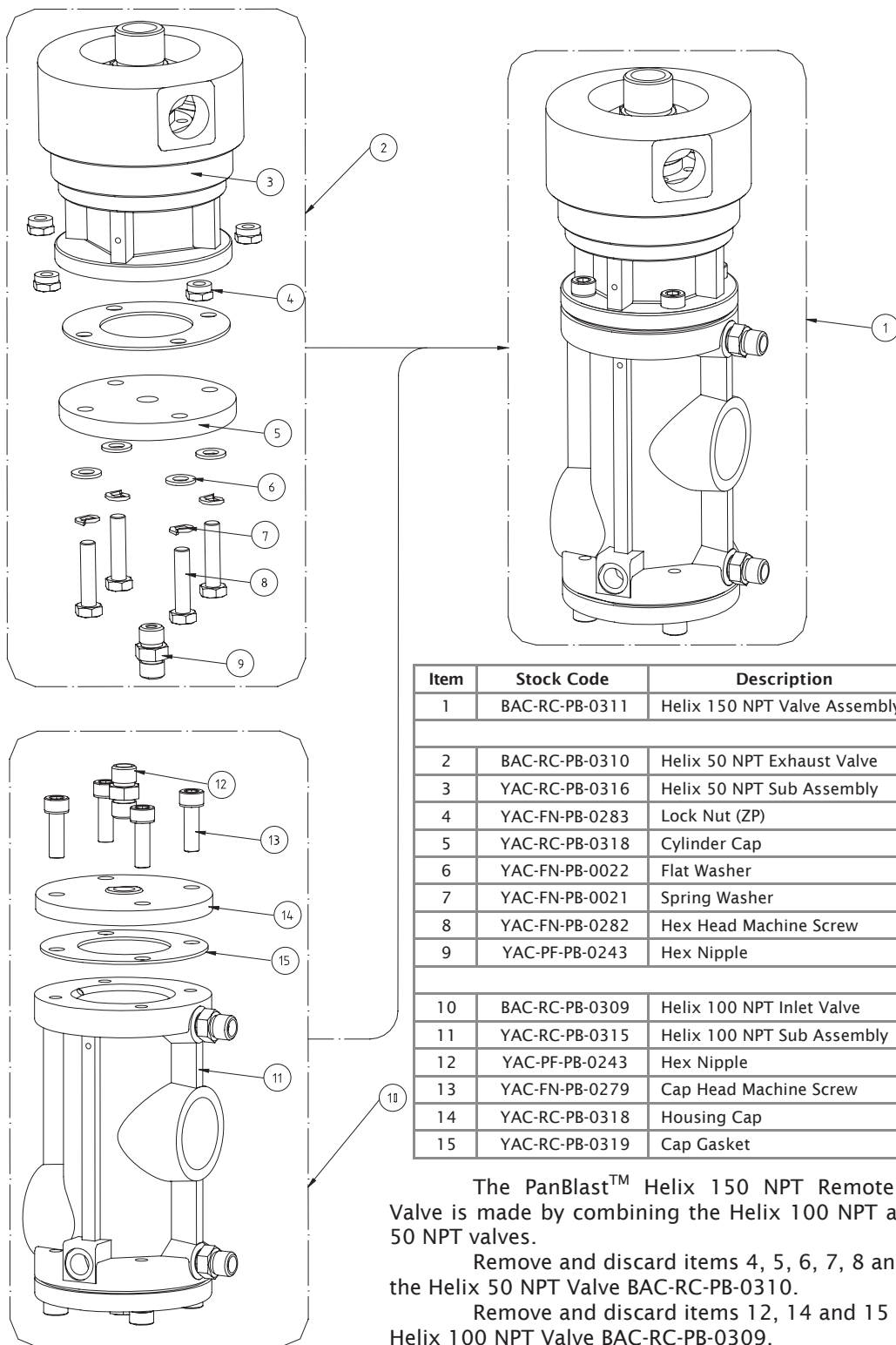
The PanBlast™ Helix 150 NPT Remote Control Valve is made by combining the PanBlast™ Helix 100 NPT Inlet Control Valve and Helix 50 NPT Exhaust Control Valve.

The PanBlast™ Helix 100 NPT Inlet Control Valve and Helix 50 NPT Exhaust Control Valve can be used as separate valves, but when attached together form a compact, combined inlet and outlet valve, which still retains all the operating features and benefits of the separate valves.

Powder coated outer surfaces along with anodized internal parts, provide for a very high resistance to corrosion and all Helix 150 NPT parts are fully interchangeable with the OEM RMS style valve.



## PanBlast™ Helix 150 NPT Remote Control Valve -



Item	Stock Code	Description	Qty
1	BAC-RC-PB-0311	Helix 150 NPT Valve Assembly	
2	BAC-RC-PB-0310	Helix 50 NPT Exhaust Valve	1
3	YAC-RC-PB-0316	Helix 50 NPT Sub Assembly	1
4	YAC-FN-PB-0283	Lock Nut (ZP)	4
5	YAC-RC-PB-0318	Cylinder Cap	1
6	YAC-FN-PB-0022	Flat Washer	4
7	YAC-FN-PB-0021	Spring Washer	4
8	YAC-FN-PB-0282	Hex Head Machine Screw	4
9	YAC-PF-PB-0243	Hex Nipple	1
10	BAC-RC-PB-0309	Helix 100 NPT Inlet Valve	1
11	YAC-RC-PB-0315	Helix 100 NPT Sub Assembly	1
12	YAC-PF-PB-0243	Hex Nipple	1
13	YAC-FN-PB-0279	Cap Head Machine Screw	4
14	YAC-RC-PB-0318	Housing Cap	1
15	YAC-RC-PB-0319	Cap Gasket	1

The PanBlast™ Helix 150 NPT Remote Control Valve is made by combining the Helix 100 NPT and Helix 50 NPT valves.

Remove and discard items 4, 5, 6, 7, 8 and 9 from the Helix 50 NPT Valve BAC-RC-PB-0310.

Remove and discard items 12, 14 and 15 from the Helix 100 NPT Valve BAC-RC-PB-0309.

Attached item 3 (YAC-RC-PB-0316) to item 11 (YAC-RC-PB-0315) using item 13 (YAC-FN-PB-0279) to create the Helix 150 NPT Valve Assembly item 1 (BAC-RC-PB-0311).