



## PanBlast™ Diaphragm Valve - Pneumatic Type

*"Surface Preparation  
Is Our Business"*

### *PanBlast™ Diaphragm Valve*

The PanBlast™ Diaphragm Valve is designed with a right angle inlet/outlet configuration and is used in blast pot exhaust applications where larger porting and flow capacities are required.

The valve is operated by an air remote pilot signal and is supplied in NPT thread format with 1" main air ports and a 1/4" pilot air port.

The body and cap are cast aluminium and the diaphragm is a nitrile rubber construction.

### *Features and Benefits*

- \* Engineered and tested for optimal performance and durability.
- \* Simple design, operation and ease of maintenance.
- \* External body surfaces are coated in a durable powder coat providing corrosion protection.
- \* Service repair kits are stocked and readily available for after sales support.

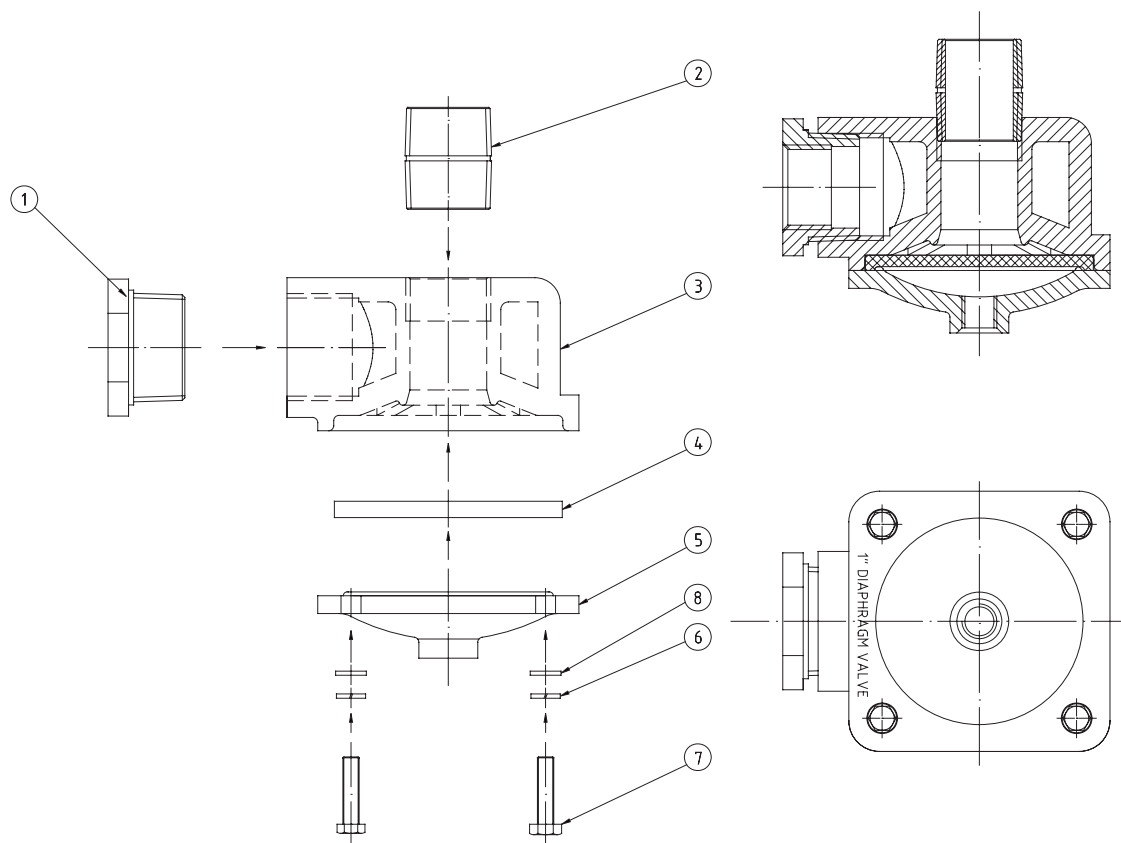


## PanBlast™ Diaphragm Valve Assembly -

Stock Code	Description	Weight
BAC-RC-PB-0361	Diaphragm Valve	1.2kg (2.6lbs)

## PanBlast™ Diaphragm Valve Parts List -

Item	Stock Code	Description	Qty
1		1 1/4" NPT x 1" NPT Reducing Bush	1
2		1" NPT Barrel Nipple	1
3		Body	1
4	YAC-RC-PB-0363	Diaphragm	1
5		Cap	1
6		Spring Washer 1/4" (ZP)	4
7		Bolt 1/4" UNC x 1" LG (ZP)	4
8		Flat Washer 1/4" (ZP)	4



Blast Pots & Cabinets - Remote Control Valves - Abrasive Control Valves - Blast Nozzles - Nozzle Holders & Couplings - Helmets & Breathing Air Filters - Blast Suits