



PanBlast™ Sola 5 NPT Remote Control Valve

*"Surface Preparation
Is Our Business"*

PanBlast™ Sola 5 NPT Remote Control Valve

The PanBlast™ Sola 5 NPT Remote Control Valve system features a piston type inlet valve, combined with a diaphragm type exhaust valve. The piston type inlet valve ensures fast and positive actuation, while the diaphragm exhaust valve provides for simple operation and ease of maintenance.

Featuring 1/2" NPT connections, the Sola 5 Valve is ideally suited to smaller capacity blast pots, where smaller size nozzles are typically used.

The Sola 5 Valves construction features extensive use of aluminium with brass fittings, as well as anodising of the valves internal surfaces and powder coating of the body and cap external surfaces, all of which provides excellent corrosion resistance.

A full range of service kits and parts are available and these parts are all fully compatible with the OEM products. The Sola 5 Valves are also available in BSP configuration.



Sola 5 Exhaust Valve



Sola 5 Inlet Valve

PanBlast™ Sola 5 NPT Inlet Valve Assembly -

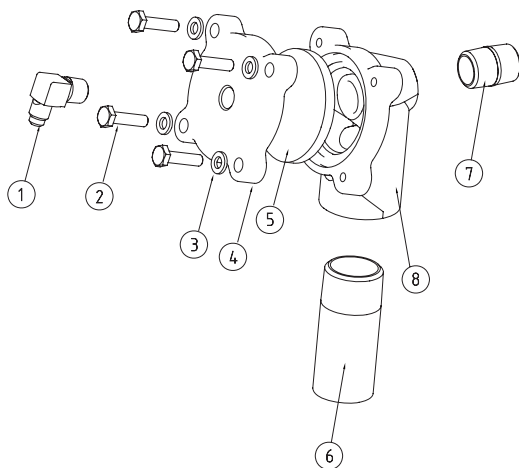
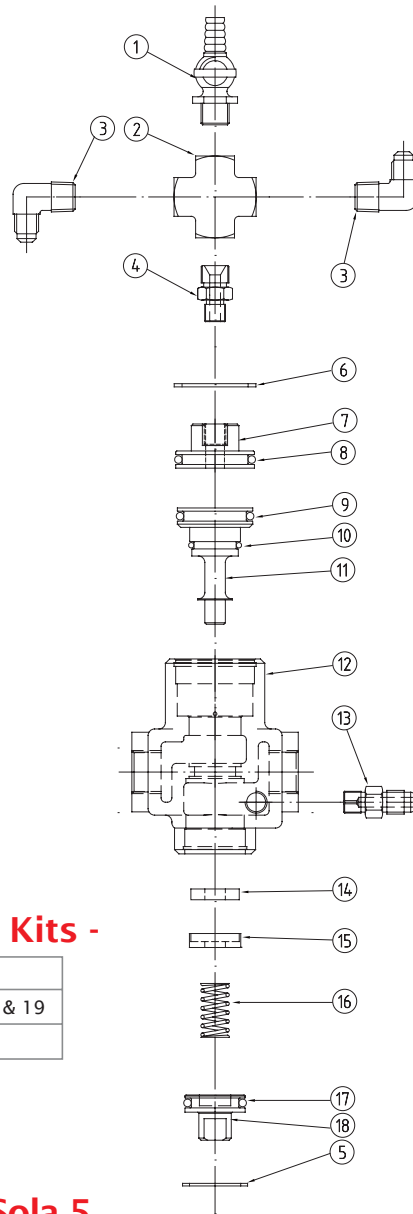
Stock Code	Description	Weight
BAC-RC-PB-0380	Sola 5 NPT Inlet Valve Assembly	0.67kg (1.48lbs)

PanBlast™ Sola 5 NPT Inlet Valve Parts List -

Item	Stock Code	Description	Qty
1	YAC-PF-PB-0249	Pet Cock 1/4" NPT	1
2	YAC-PF-PB-0250	Cross - 1/4" NPT	1
3	YAC-PF-PB-0215	Elbow - 1/4" NPT	2
4	YAC-RC-PB-0138	Hex Reducing Nipple - 1/4" x 1/8" NPT	1
5	YAC-PF-PB-0204	Circlip - 28mm Bore	2
6	YAC-FN-PB-0203	Circlip - 36mm Bore	1
7	YAC-RC-PB-0377	Sola 5 NPT Valve - Cap	1
8	YAC-BS-PB-0015	O-Ring - 30mm x 3.53mm	1
9	YAC-BS-PB-0005	O-Ring - 28mm x 3.53mm	1
10	YAC-BS-PB-0002	O-Ring - 19mm x 2.62mm	1
11	YAC-RC-PB-0126	Sola 5 Valve - Inlet Piston	1
12	YAC-RC-PB-0378	Sola 5 Valve - Inlet Body	1
13	YAC-PF-PB-0216	Hex Nipple 1/8"	1
14	YAC-RC-PB-0131	Sola 5 Valve - Flat Rubber Washer	1
15	YAC-RC-PB-0128	Sola 5 Valve - Inlet Retainer	1
16	YAC-RC-PB-0129	Sola 5 Valve - Spring	1
17	YAC-BS-PB-0014	O-Ring - 21.2mm x 3.53mm	1
18	YAC-RC-PB-0130	Sola 5 Valve - Bottom Plug	1

PanBlast™ Sola 5 NPT Inlet Valve Service Kits -

Stock Code	Description
BAC-RC-PB-0006	Sola 5 Seal Kit - Includes items 6, 8, 9, 10, 14, 15, 16, 17 & 19
BAC-RC-PB-0008	Sola 5 Piston Kit - Includes items 6, 7, 11, 15, 18 & 19



PanBlast™ Sola 5 NPT Exhaust Valve Assembly -

Stock Code	Description	Weight
BAC-RC-PB-0018	Sola 5 Exhaust Valve Assembly	0.76kg(1.68lbs)

PanBlast™ Sola 5 NPT Exhaust Valve Parts List -

Item	Stock Code	Description	Qty
1	YAC-PF-PB-0215	Elbow - 1/4" M x 7/16" UNF Comp.	1
2	YAC-FN-PB-0254	Machine Screw - 1/4" UNC x 1"	4
3	YAC-FN-PB-0118	Spring Washer - 1/4"	4
4	YAC-RC-PB-0254	Sola 5 - Exhaust Valve Cap	1
5	YAC-RC-PB-0253	Sola 5 - Exhaust Valve Diaphragm	1
6	YAC-RC-PB-0106	Sola 5 - 1" NPT x 3" Toe Nipple	1
7	YAC-PF-PB-0227	Nipple Barrel 1/2" NPT	1
8	YAC-RC-PB-0252	Exhaust Valve Diaphragm Body	1