



PanBlast™ Kombi NPT Remote Control Valve

*"Surface Preparation
Is Our Business"*

PanBlast™ Kombi NPT Remote Control Valve

The PanBlast™ Kombi NPT Remote Control Valve is a one piece combination inlet and outlet valve utilized to control compressed air supply into and out of the blast pot.

A single piston assembly is utilized to both open and close the valve's inlet and outlet sections simultaneously. The valve is operated by a pilot air signal received when the operator activates the PanBlast™ AirStop Remote Control Handle.

In its un-activated state, a return spring is used to compress a diaphragm against the valve's inlet port, preventing compressed air from entering the blast pot or blast hose.

Upon receiving the signal from the control handle, the piston assembly retracts, opening the inlet port and simultaneously clamps closed the blow down exhaust hose, permitting the pot to pressurize.

When the control handle is released, the valve returns to its un-activated state, and the pot de-pressurizes.

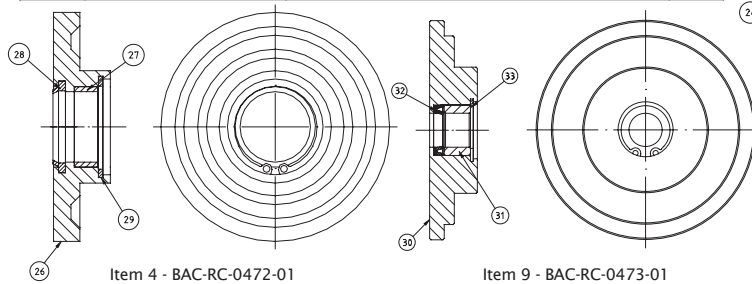


PanBlast™ Kombi NPT Valve Assembly -

Stock Code	Description	Weight
BAC-RC-0143-02	Kombi Valve Assembly	4.3kg (9.5lbs)

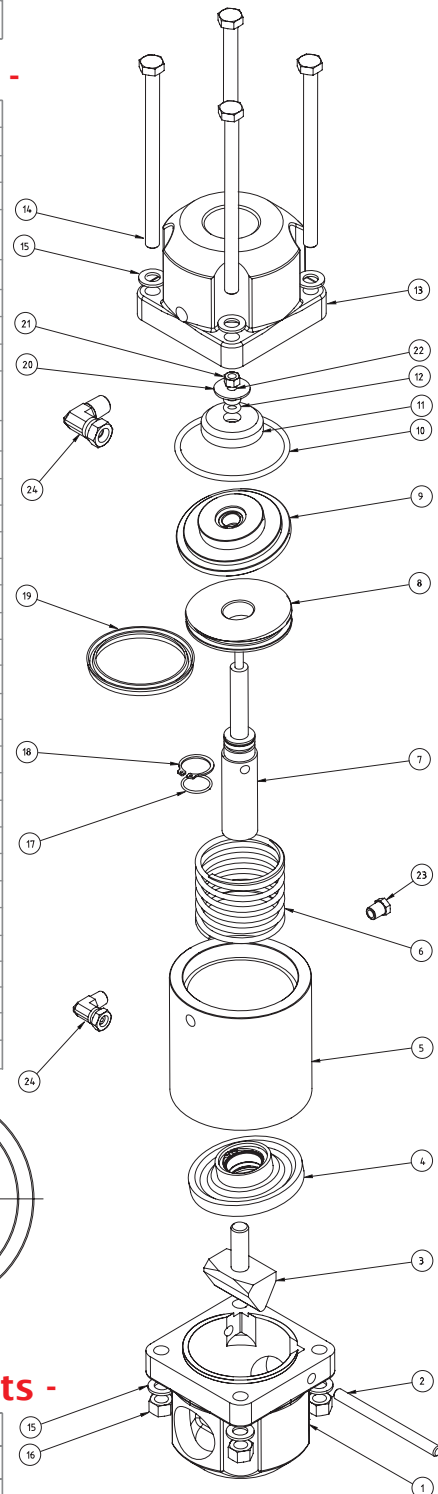
PanBlast™ Kombi NPT Valve Parts List -

Item	Stock Code	Description	Qty
1	YAC-RC-PB-0144	Cap	1
2	YAC-RC-PB-0145	Pin	1
3	YAC-RC-0146-02	Pinch Ram	1
4	BAC-RC-0472-01	Upper Rod Guide Assembly Combines items: 26, 27, 28 & 29	1
5	YAC-RC-PB-0150	Cylinder	1
6	YAC-RC-PB-0151	Spring	1
7	YAC-RC-PB-0152	Shaft	1
8	YAC-RC-PB-0153	Piston	1
9	BAC-RC-0473-01	Lower Rod Guide Assembly Combines items: 30, 31, 32 & 33	1
10	YAC-BS-PB-0016	O-Ring	1
11	YAC-RC-PB-0158	Valve Plug	1
12	YAC-BS-PB-0017	O-Ring	2
13	YAC-RC-PB-0160	Base	1
14	YAC-FN-PB-0215	Hex Head Bolt	4
15	YAC-FN-PB-0017	Flat Washer	8
16	YAC-FN-PB-0219	Nut	4
17	YAC-BS-PB-0018	O-Ring	1
18	YAC-FN-PB-0216	External Circlip	1
19	YAC-RC-PB-0162	Piston Seal	1
20	YAC-FN-PB-0217	Flat Washer	1
21	YAC-FN-PB-0256	Lock Nut	1
22	YAC-FN-PB-0233	Curved Spring Washer	1
23	BAC-AF-PB-0168	Exhaust Filter	1
24	YAC-PB-PB-0234	Elbow	1
25	YAC-PB-PB-0235	Elbow	1
26	YAC-RC-0148-01	Upper Rod Guide	1
27	YAC-RC-0149-01	Upper Rod Guide Bush	1
28	YAC-RC-PB-0147	Upper Rod Seal	1
29	YAC-FN-0299-00	Circlip	1
30	YAC-RC-0154-02	Lower Rod Guide	1
31	YAC-RC-0156-01	Lower Rod Guide Bush	1
32	YAC-RC-PB-0155	Lower Rod Seal	1
33	YAC-FN-0300-00	Circlip	1



PanBlast™ Kombi NPT Valve Service Kits -

Stock Code	Description
BAC-RC-PB-0242	End Cap Kit - Includes items 1 & 2
BAC-RC-PB-0265	Seal Serve Kit - Includes items 10, 11, 12, 17, 18, 19, 20, 21, 22, 28 & 32
BAC-RC-PB-0365	Plug Kit - Includes items 11, 12, 20, 21 & 22



Blast Pots & Cabinets - Remote Control Valves - Abrasive Control Valves - Blast Nozzles - Nozzle Holders & Couplings - Helmets & Breathing Air Filters - Blast Suits