

PanBlast™ Galaxy Supplied Air Respirator Helmet

*"Surface Preparation
Is Our Business"*



The PanBlast™ Galaxy Supplied Air Respirator Helmet is a non-certified Supplied Air Respirator, designed to protect users from health hazards associated with abrasive blasting, flying and ricocheting abrasives, excessive noise levels and dust generated during operations.

The PanBlast™ Galaxy Supplied Air Respirator Helmet weighing only at 3.2kg (7lbs) incorporates a box front type lens design, allowing the operator a concentrated field of vision with limited side glare or distortion which is normally associated with long oval type blasting lenses.

PanBlast™ Galaxy Supplied Air Respirator Design Features:

- * Rigid bright Safety Red polyethylene molded outer shell and washable/removable Safety Yellow Cape providing visibility and high impact protection.
- * Front flow air dispersion system maximizing operator comfort and lens visibility.
- * Protective rim on outer shell, accompanied by sealing band and O-ring, eliminating abrasives and dust ingress.
- * Quick release Window frame with 3 layers of protection; Outer Tear Off Lenses, Intermediate Lens and Inner Lens.
- * Adjustable head harness ensuring proper fitment.
- * Helmet Strap Handle for easy handling and storage.
- * Noise suppression Breathing Tube supplied as standard.
- * Suitable for all abrasives blasting operations.
- * Optional integration with PanBlast™ Air Flow/Air Cooling or Climate Controllers.
- * Replaceable lenses are available in the forms of 100 pieces/packet (Outer Tear Off Lenses), 50 pieces/packet (intermediate Lens) and 20 pieces/packet (Inner Lens).
- * Optional impact resistant inner liner lens – conforming to AS1337-V grade impact resistance.



Note: Regulatory requirements for breathing air quality will vary depending on your region.

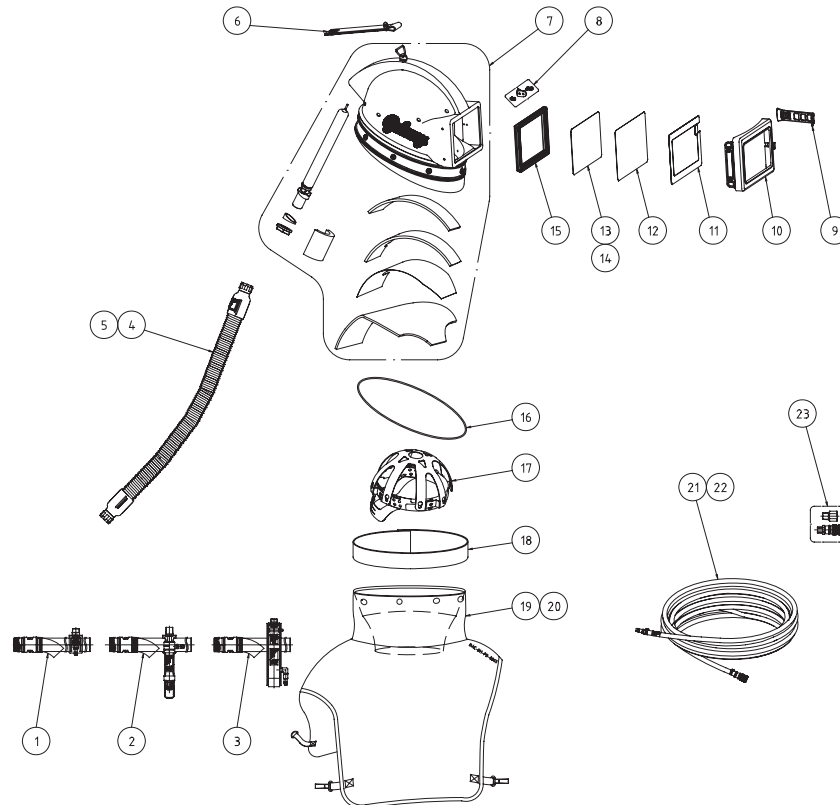
- For NIOSH requirements, breathing air must be of Grade D quality.
- For CE requirements, breathing air must be in accordance with EN12021.
- For AS/NZS requirements, breathing air must be in accordance with AS/NZS1715.

PanBlast™ Galaxy Supplied Air Respirator Helmet Assemblies -

Stock Code	Description	Weight
BAC-BH-0183-00	Galaxy Supplied Air Respirator Helmet With High Visibility Cape	3.2Kg (7.00lbs)
BAC-BH-0180-00	Galaxy Supplied Air Respirator Helmet With High Visibility Cape & Air Flow Controller	3.5Kg (7.71lbs)
BAC-BH-0181-00	Galaxy Supplied Air Respirator Helmet With High Visibility Cape & Air Cooling Controller	3.7Kg (8.15lbs)
BAC-BH-0182-00	Galaxy Supplied Air Respirator Helmet With High Visibility Cape & Climate Controller	4.1Kg (9.03lbs)

PanBlast™ Galaxy Supplied Air Respirator Helmet Parts List-

Item	Stock Code	Description	Qty
1	BAC-AF-PB-0036	Air Flow Controller	1
2	BAC-AF-PB-0032	Air Cooling Controller	1
3	BAC-AF-PB-0175	Climate Controller	1
4	BAC-BH-PB-0049	Breathing Tube	1
5	BAC-BH-0161-03	AcoustiFlex Breathing Tube (Optional)	1
6	BAC-BH-PB-0009	Respirator Strap Handle Kit	1
7	YAC-BH-0229-00	Respirator Helmet Shell Assembly	1
8	YAC-BH-0230-00	Frame Strap Clasp	1
9	YAC-BH-0189-00	Frame Strap	1
10	YAC-BH-0233-00	Window Frame Assembly	1
11	BAC-BH-0191-00	Tear Off Outer Lens - Pack of 100	0.03
12	BAC-BH-0192-00	Intermediate Lens - Pack of 50	0.02
13	BAC-BH-0219-00	Inner Lens Standard - Pack of 20	0.05
14	BAC-BH-0193-00	Inner Lens Premium - Pack of 20 (Optional & Sold Separately)	0.05
15	BAC-BH-0194-00	Inner Lens Gasket	1
16	YAC-BH-0195-00	Helmet Shell O-Ring	1
17	YAC-BH-0231-00	Suspension Harness Kit	1
18	YAC-BH-PB-0012	Sealing Band	1
19	BAC-BH-PB-0065	Inner Collar & Outer Cape - High Visibility	1
20	BAC-BH-PB-0004	Inner Collar & Outer Cape - Standard (Optional, Double Layer Material)	1
21	BAC-AF-PB-0123	20m Respirator Compressed Airline Hose - Standard	1
22	BAC-AF-PB-0071	20m Airline Hose W/ Quick Disconnects (Optional)	1
23	BAC-BH-0137-00	Quick Disconnect BSP/NPT Fittings Kit (Optional)	1



Blast Pots & Cabinets - Remote Control Valves - Abrasive Control Valves - Blast Nozzles - Nozzle Holders & Couplings - Helmets & Breathing Air Filters - Blast Suits