



PanBlast™ Sola 5 BSP Remote Control Valve

*"Surface Preparation
Is Our Business"*

PanBlast™ Sola 5 BSP Remote Control Valve

The PanBlast™ Sola 5 BSP Remote Control Valve system features a piston type inlet valve, combined with a diaphragm type exhaust valve. The piston type inlet valve ensures fast and positive actuation, while the diaphragm exhaust valve provides for simple operation and ease of maintenance.

Featuring 13mm (1/2") connections, the PanBlast™ Sola 5 BSP Remote Control Valve is ideally suited to smaller capacity blast pots, where smaller size nozzles are typically used.

The PanBlast™ Sola 5 BSP Remote Control Valve construction features extensive use of aluminium with brass fittings, as well as anodizing of the valves internal surfaces which provides excellent resistance to corrosion.

A full range of service kits and parts are available and these parts are all fully compatible with the OEM products. The PanBlast™ Sola 5 BSP Remote Control Valve is also available in both BSP and NPT configurations, making suitable for all global markets.



Sola 5 BSP Exhaust Valve



Sola 5 BSP Inlet Valve

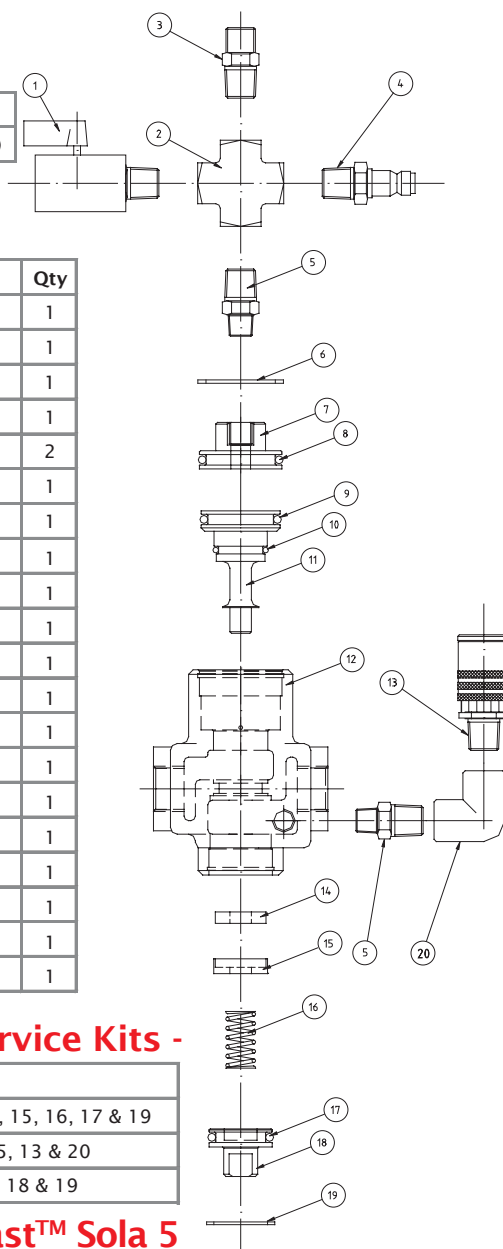
Blast Pots & Cabinets - Remote Control Valves - Abrasive Control Valves - Blast Nozzles - Nozzle Holders & Couplings - Helmets & Breathing Air Filters

PanBlast™ Sola 5 BSP Inlet Valve Assembly -

Stock Code	Description	Weight
BAC-RC-PB-0017	Sola 5 Inlet Valve Assembly	0.67kg(1.48lbs)

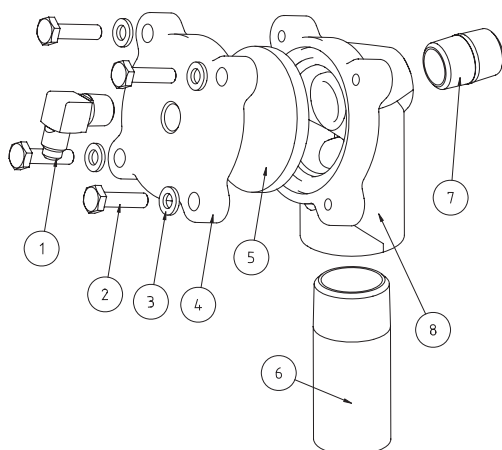
PanBlast™ Sola 5 BSP Inlet Valve Parts List -

Item	Stock Code	Description	Qty
1	YAC-PF-PB-0167	Mini Ball Valve - 1/4" BSP	1
2	YAC-PF-PB-0105	Cross - 1/4" BSP	1
3	YAC-PF-PB-0104	Hex Nipple - 1/4" Compression	1
4	YAC-PF-PB-0069	Quick Coupling - Male 1/4"	1
5	YAC-PF-PB-0124	Hex Reducing Nipple - 1/4" x 1/8" BSP	2
6	YAC-FN-PB-0203	Circlip - 36mm Bore	1
7	YAC-RC-PB-0125	Sola 5 Valve - Cap	1
8	YAC-BS-PB-0015	O-Ring - 30mm x 3.53mm	1
9	YAC-BS-PB-0005	O-Ring - 28mm x 3.53mm	1
10	YAC-BS-PB-0002	O-Ring - 19mm x 2.62mm	1
11	YAC-RC-PB-0126	Sola 5 Valve - Inlet Piston	1
12	YAC-RC-PB-0127	Sola 5 Valve - Body	1
13	YAC-PF-PB-0068	Quick Coupling - Female 1/4"	1
14	YAC-RC-PB-0131	Flat Rubber Washer	1
15	YAC-RC-PB-0128	Inlet Retainer	1
16	YAC-RC-PB-0129	Sola 5 Valve - Spring	1
17	YAC-BS-PB-0014	O-Ring - 21.2mm x 3.53mm	1
18	YAC-RC-PB-0130	Bottom Plug	1
19	YAC-FN-PB-0204	Circlip - 28mm Bore	1
20	YAC-PF-PB-0040	Elbow F & F - 1/4"	1



PanBlast™ Sola 5 BSP Inlet Valve Service Kits -

Stock Code	Description
BAC-RC-PB-0006	Sola 5 Seal Kit - Includes items 6, 8, 9, 10, 14, 15, 16, 17 & 19
BAC-RC-PB-0007	Sola 5 Fittings Kit - Includes items 1, 2, 3, 4, 5, 13 & 20
BAC-RC-PB-0008	Sola 5 Piston Kit - Includes items 6, 7, 11, 15, 18 & 19



PanBlast™ Sola 5 BSP Exhaust Valve Assembly -

Stock Code	Description	Weight
BAC-RC-PB-0018	Sola 5 Exhaust Valve Assembly	0.76kg(1.68lbs)

PanBlast™ Sola 5 BSP Exhaust Valve Parts List -

Item	Stock Code	Description	Qty
1	YAC-PF-PB-0215	Elbow - 1/4" M x 7/16" UNF Comp.	1
2	YAC-FN-PB-0254	Machine Screw - 1/4" UNC x 1"	4
3	YAC-FN-PB-0118	Spring Washer - 1/4"	4
4	YAC-RC-PB-0254	Sola 5 Exhaust Valve Cap	1
5	YAC-RC-PB-0253	Diaphragm	1
6	YAC-RC-PB-0106	Toe Nipple - 1" NPT	1
7	YAC-PF-PB-0227	Nipple - 1/2" NPT	1
8	YAC-RC-PB-0252	Sola 5 Exhaust Valve Body	1